




Ringmore

Parish Newsletter


Editors:
 Andrea Stanesby 810760
 Yvonne Sheppard 810341
 Issue 121
 September 1995



Wedding Bouquets  Funeral Tributes

Flowers for all occasions

"Rosemary"
 (Mrs. R. Wilson)



1 Broad Street,
 Modbury,
 S. Devon

Telephone
 (Shop) 0548 830048



September

This month's puzzle is simple! Aren't they all? The centre column comprises acceptable four-letter words which end the words in the first column and begin those in the third column. However, columns 1 & 3 have been jumbled. Your task is to put both columns in the correct order.

FLAG	LAND	SHOT
LUMBER	HOLD	BLED
SWAN	FAST	LET
DOOR	WIND	ASS
HIGH	SHIP	WORKS
STERN	KING	OVER
SLIP	SING	NET
FUR	HANG	PIN
PLEA	ROAD	WRIGHT
HOUSE	JACK	JAMMER
OVER	LONG	LUBBER
CROSS	KNOB	ALL

August solution

O	O	J	A	P	A	N
M	A	Z	E	G	I	
I	O	S	H	A	L	L
T	E	N	D	A	S	
S	E	R	A	S	E	V
C	I	T	I	K	E	
Q	U	I	F	F	O	X
B	E	T	W	E	R	E
M	E	S	S	Y	R	S

There are four successful entries this month.

Yog-sothoth, TDF and The Furry Boys matched the solution above whilst Doreen provided a correct alternative. Well done everyone!

St Luke's Hospice Appeal Week 9th - 16th September 1995

I'm calling house-to-house again this year. Can we beat last time's generous response? Please help any way as best you're able. Thank you. Drina Williams 810621

NEIGHBOURHOOD

Many people are still not observing the following guideline:-

If you are suspicious about anything

at all

RING THE POLICE
 852326 or 999

DON'T WAIT

WATCH

AIR FARES TO ANYWHERE

FOR THE FAIREST DEAL ON A FARE DEAL

- CAR HIRE
- INSURANCE
- FERRIES
- HOTELS



DIAL (0548) 810869

FARE DEALS TRAVEL

HIGHER MANOR, RINGMORE,
 KINGSBRIDGE TQ7 4HJ

MANURE

Brian and Jinny McCabe invite everyone in Ringmore to dig, collect and transport manure from the Main Barn and the Loose Box at Windwood Farm. Ring us at 810538.

FREE! FREE!

Devon County Council Libraries



Visit dates:- 4th & 18th September
 Challaborough 2.25 - 2.40pm
 Ringmore Church 2.45 - 3.25

T.P.S. SERVICES

INTERIOR - EXTERIOR
 PAINTER - DECORATOR
 PROPERTY MAINTENANCE &
 RENOVATION
 TILING - GLAZING
 GARDEN MAINTENANCE

FOR FREE ESTIMATES CONTACT
 Mr. T.P. SMITH on

Modbury (0548) 830961

HORSE MANURE

60p bag - delivered
 Phone Jane 810707

Painting & Drawing Class

Why not pick up where you left off? Beginners onwards are welcome to come and join our weekly class at Kingston Reading Room on Mondays 2.00pm - 4.00pm, starting Sept. 11th. I aim to provide a basic foundation, looking at different techniques and aspects such as perspective, tone, pen & ink, watercolour, oil paints, etc..

For more information call Belinda Ireland 810854.

DEADLINE DEADLINE Friday 22nd September DEADLINE DEADLINE

PARISH CHURCH PAGE

At the end of another blazing hot day in August it seems somewhat strange to be writing about the Autumn! But this is the time, nevertheless, to tell you about the forthcoming "Alpha" Course starting in September here in our team of parishes. There is an Invitation Supper on Sept.9th at 7.30pm in the Memorial Hall, Aveton Gifford, where the course will be explained in an informal setting. The weekly course itself starts on Tues. Sept.26th at 7.0pm in A.G.Hall (& then again every Tuesday thro' to Dec.5th.)

And what's the point of it? Well, a fresh look at old truths - an informal kind of basic Christianity with a strong emphasis on fellowship in good company and good fun. The evenings start with supper, include a talk, discussion and the inevitable coffee and biscuits to finish! We have a leaflet explaining it available at our churches.

Don't let prejudice hold you back, re-organise your schedule if you possibly can - whatever you do, don't miss out - this course will be something special!

Finally, just to mention that the Inauguration Service for the Modbury Team (of which our three churches will be part) is to be held at St.George's, Modbury on Mon. Sept.18th at 7.30pm, when the Bishop of Plymouth will be "putting us together". We have waited a long time for this event and we are relieved that it will take place before Doreen and I move away into full retirement - but we'll keep our farewells until the October newsletter.

DIARY FOR SEPTEMBER

Friday 1st	7.30pm United Choir Practice
<u>SUNDAY 3rd</u>	9.00am 1662 Communion at Kingston 11.00am Family Service at Ringmore 6.00pm Evening Prayer at Bigbury
Sa'day 9th	7.30pm <u>Alpha Course Invitation Supper at Aveton Gifford Hall.</u>
<u>SUNDAY 10th</u>	9.00am 1980 Communion at Ringmore 11.00am Morning Service & HC at Bigbury 6.00pm Evening Prayer at Kingston
Monday 11th	7.00pm "Bring & Share" Rwanda Supper in the Church Hall, welcoming <u>Bishop & Mrs. Ken Barham</u> , Asst.Bishop of Cyangugu having returned from Rwanda on Sept.2nd!
<u>SUNDAY 17th</u>	9.00am 1980 Communion at Bigbury 11.00am Family Service at Kingston 6.00pm Evening Prayer at Ringmore
Monday 18th	7.30pm <u>Modbury Team Inauguration Service at St.George's</u>
<u>SUNDAY 24th</u>	9.00am 1662 Communion at Ringmore 11.00am Harvest Family Service & Lunch at Bigbury 6.00pm Harvest Thanksgiving & Supper at Kingston
Tu'day 26th	7.00pm Alpha Course begins at Aveton Gifford Hall
Friday 29th	7.00pm Harvest Thanksgiving & Supper at Ringmore
<u>SUN OCT.1st</u>	9.00am 1980 Communion at Kingston 11.00am Harvest Family Service at Ringmore 6.00pm Evening Prayer at Bigbury

Looking Ahead Thur.5th 7.30pm United Church Councils meet at the Church Hall.

JOHN AND BARBARA TAYLOR
MARWELL CROSS GARDENS
 Tel: 810366

Flowers for weddings, birthdays,
 funerals and all occasions
 Perennials available

PHOTO EXPRESS - Modbury
 Hours of opening

Monday, Tuesday 9.0 a.m.-1.0 p.m.
 Thursday, Friday & 2.30-6.0 p.m.
 Wednesday 9.0 a.m.-1.0 p.m.
 5.0 p.m.-6.0 p.m.
 Saturday 9.0 a.m.-1.0 p.m.
 2.30 - 5.0 p.m.

MODBURY PHARMACY
 Tel: 830215

Modbury Court
 Unit 5

THE BARBER'S SHOP

OPEN 9 a.m. - 5 p.m.
 THURSDAYS & SATURDAYS
 LATE EVENING TUES & FRI
 6.30 - 8.30

For Further Details - 01548 810210

Journey's End Journal

We are pleased that this Journal is now appearing in the Kingston Newsletter. We hope Kingston villagers will be interested in the various events taking place at the **Journey's End Inn**.

In July we held our first Exhibition of local art. Paul Kane was the featured artist and the display of his photos, batiks and paintings impressed a large number of people. Most of the works were sold which resulted in a generous donation to Paul's chosen charity 'Vetaid'.

Our conservatory provided an ideal space for such an exhibition and we are hoping to discuss any similar events with other local artists.

0548 810205



Our **FOOD FEATURE** this month will be 'A MENU OF MELLOW FRUITFULNESS' on the evenings of Friday 29th and Saturday 30th September. Dining room reservations are recommended.

Live Music Nights are Friday Sept 8th - 'GIN'

Friday Sept 15th - 'FAIR PLAY'

Quiz Nights will begin again on Thursday 5th October at 9.00pm

RINGMORE HISTORICAL SOCIETY

The Society has arranged an outing to Ford House, Newton Abbot on Sept 20th. A guided tour of the house is included. This will be followed by a short visit to the "other" Ringmore near Shaldon. The afternoon will conclude with a cream tea. Cars will leave Ringmore Church at 1.30pm. All are welcome. Please ring me on 810233 for further details. J H Parry (Hon. Sec.)

NIGEL FROST

Optometrist F.R.C.O.

MODBURY

CHENE COURT, POUNDWELL STREET
 (next to car park)

For appointment phone
(0548) 830944

OPEN SATURDAY MORNING
 PERSONAL SERVICE

Contact Lenses, Spectacles, Accessories,
 Complete Eye Examinations

BRIAN J RUNDLE

PLUMBING & HEATING ENGINEER

For all requirements from a
 tap washer to new central
 heating systems

Tel: 01548 810707

Oil fired Agas and Rayburns serviced
 We also carry out oil burner conversions

Your Local Accountant

Let us solve your accounting
 and taxation problems

Contact
 Ian or Yvonne Sheppard
 (01548 810341) (Evenings)



**SHEPPARD
 POLLITT**

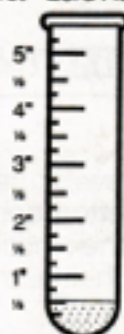
The Accounting Centre
 Ocean Building
 Queen Anne's Battery
 Plymouth PL4 0LP

01752 220333 Fax 01752 221742

Rainfall

1st - 23rd August

Sadly, after two
 appeals this year, no
 one has volunteered to
 record the rainfall for
 the Newsletter. So,
 this spot will be missing
 in future issues unless
 you know of someone
 who can help. This
 month's reading is from
 the Editor's teacup on
 the windowsill!



Rain on 23rd brought the
 total to half an inch.

If you have had more,
 count yourself lucky!

THANK YOU BACCHUS

for the many years
 you have recorded
 the rainfall for the
 Newsletter.

This was much
 appreciated by
 many people.

CONTINUED

KEN WARD'S MEMORIES OF SOUTH DEVON 1940 - from Reg Trant

Our listening post soon started to pick up the E Boat intercom - Quite a lot of chit chat and also found that they used the same channels to talk to their patrolling aircraft. All information we collected was passed directly to the SNSO's at Dartmouth and Plymouth and As a secondary occupation we were told to keep contact with the locals and particularly with Local Defence Volunteers, later to become the Home Guard, who were commanded by one Capt Beer. The LDV had detachments at most of the coastal villages between Plymouth and Dartmouth Naval Areas, but we did not think that pitchforks etc., were much use to repel raiders, so, courtesy of RN Dartmouth, I managed to scrounge a number of Belgian Hotchkiss machine guns (rather like our Lewis guns) which had been brought over by a number of Belgian trawlers which had escaped from Europe and become a part of the Dartmouth inshore patrol. We issued these guns one to each LDV detachment. For practice we floated some glass net floats out to sea and got the LDV chaps to fire at them with single shots. Clifford Courtney, son of the Innkeeper and ex Navy, smashed one with his first shot and the rest were almost as good.

After a short time the RE's started to build a beach barricade with posts and barbed wire along the shoreline - they were quickly told - "If you don't leave a way through for our boats there will be no more crab salads etc.," Unofficially a gap appeared! Old Mr Courtney, who spent most of the day sitting outside his Inn said it was all a waste of effort and no ship of any size could get close in to Beesands.

Occasionally we received a signal saying "anticipate enemy landing personnel in small boats" We alerted the various lookout posts and on some occasions we sat on the cliff and watched while a canoe came ashore - was destroyed - and then went down to welcome the arrival before sending him off to security at Dartmouth.

TO BE CONTINUED



PRE-TEXT

Graphics Design / Artwork
Flyers/Posters/Leaflets/Advertisements
Overhead Foils - Design & Preparation
Logo Design
All aspects of Desk Top Publishing

GEOFF DYKES, RINGMORE VEAN, RINGMORE, TQ7 4HL
TEL 0548 810123

HIRAM BOWDEN
Lucas Garage, Ashford

Car repairs and servicing
M.O.T. preparation
Your car collected and returned
Tel: Daytime 0548 550129
Evening 0752 896065



R H PICKLES
2, Broad Street
Modbury, Ivybridge
Devon PL21 0PS
DELIVERY THURSDAY
0548 830412

For all DIY supplies,
clothing and footwear
CALOR GAS AND OIL

YOUR LOCAL BUILDER
will undertake your
building, tiling and decorating

SPECIALIST SERVICE FOR SUPPLY OR
FITTING OF UPVC DOORS, WINDOWS
AND CONSERVATORIES

A.M. KING AND SONS
RINGMORE
Tel: 810570

Julie
FULLY QUALIFIED
MOBILE HAIRSTYLIST

Ladies & Gents
Competitive Prices
Ansaphone Available

Tel: Bigbury-on-Sea 810634

Modbury **TAXI** Service

Licensed Private Hire
24 Hour Availability
Air, Sea & Rail Connections
Local and Long Distance

0548 830961

Mobile 0374 211758



WOMEN IN THE COMMUNITY

We would like to thank everyone who contributed in any way to the success of our fête. The afternoon was most enjoyable and appreciated by our visitors as part of their holiday. We are grateful for your support towards the upkeep of our hall and grounds.

The next monthly meeting is on Thursday 14th September, when Guy Eddy will be reliving his Far East Flying experiences. Visitors will be welcome at 8.15pm.

Pam Brunskill
Joint President

THANK YOU!

Thank you again, all Tesco
Computer Token Savers.

Modbury School has been enabled to get a more sophisticated computer than the stolen one due to the high number of tokens saved by the community at large.

Belinda Ireland

Ringmore Shop & Post Office

Rosemary & John Tate

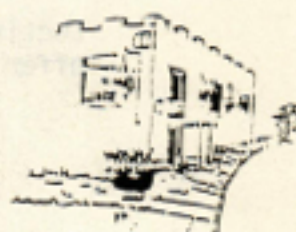
TEL: 01548 810238

FAX: 01548 810891

OFF-LICENCE

PHOTOCOPYING

FAX



SEPTEMBER NEWS

Phew! The hot weather brought an extra influx of tourists, and a good start to the new shop year - and we certainly need it!

Without the summer trade, there would be no winter trade, and without the winter trade there would be no village shop at all.

So, don't let Ringmore go the same way as Kingston, but
DO KEEP YOUR CUSTOM COMING - LOTS OF IT - LOTS OF YOU - ALL YEAR ROUND

SHOW THAT YOU VALUE YOUR VILLAGE SHOP

OPENING TIMES

POST OFFICE HOURS

MONDAY	TUESDAY	THURSDAY	FRIDAY	9 a.m. - 1 p.m.
--------	---------	----------	--------	-----------------

SHOP OPENING TIMES

UNTIL AND INCLUDING SATURDAY 30TH SEPTEMBER

MONDAY	8am - 1pm and 2pm - 6pm
TUESDAY	8am - 1pm and 2pm - 6pm
WEDNESDAY	8am - 1pm
THURSDAY	8am - 1pm and 2pm - 6pm
FRIDAY	8am - 1pm and 2pm - 6pm
SATURDAY	8am - 1pm and 2pm - 6pm
SUNDAY	8am - 1pm and 2pm - 6pm

KEEP SUPPORTING YOUR VILLAGE SHOP AND LOOKING OUT FOR FURTHER DETAILS!

P.T.O...P.T.O...P.T.O...P.T.O...P.T.O...P.T.O...P.T.O...P.T.O...P.T.O...

September Specials

Loctite Superglue - normal retail price £2.09 - very special
offer price **ONLY 99p**



Felt-tipped pens 57p for 10

NEW STAMP ISSUE

'COMMUNICATION' On sale Tuesday, 5th September, in honour
of Marconi and Rowland Hill - two pioneers of communication

NEW LICENSING LAWS

mean that we can now sell alcoholic drinks from 10a.m. on
Sundays as well as from 8a.m. on other days.

PLEASE REMEMBER

to keep bringing your donations of plants, potted up and
labelled, to be 'sold' as contributions to help make Ringmore
bonfire night and firework display even better than last year

SO, BRING and BUY - from now until the end of October.

25 July 1995

Dear Parent

MODBURY SCHOOL like countless others, is experiencing severe financial hardship as a consequence of the cuts in the Education budget.

There is a shortfall in this financial year of approximately £10,000 and with little likelihood of the cuts being reversed, funds must be found from other means.

In view of this, a Sponsored Walk of approximately eight miles along the Plym Valley cycle path from Coypool, Plymouth to Clearbrook has been organised.

A list of the children taking part from our parish has been attached and I would be grateful if you would help our cause by sponsoring one or more of them. If you would like to help please complete the form below and hand it in to the school on or before Friday 15th September.

Thank you in anticipation.

Yours sincerely,

Graham Barkham

Name:

Address:

I WOULD LIKE TO SPONSOR	PER MILE WALKED	TO COMPLETE THE WALK
	For per mile	£
	For per mile	£
	For per mile	£
	For per mile	£
	For per mile	£
	For per mile	£
	For per mile	£
	For per mile	£

I would like to make a Donation of £..... to the central fund.

Signed: Dated:

MODBURY SCHOOL BUILDING FUND -

CHILDREN FROM RINGMORE

Wilbur Rundle, Christopher and Andrew Swainson, Imogen Ireland, Laura and John Rollason, Katie and Claire Wilkins, Stephen Peace, Sophie and Jimmy Barkham. Laura Hooper, Lauren and Katie Parker-Smith.