

THE RINGMORE PARISH BOUNDARY STONES PROJECT 2010



RINGMORE BOUNDARY STONES 2010



The Ringmore Community and its countryside was much loved by George and Nancy Grimshaw who lived in Ringmore for some 25 years. This project is an attempt to return to the Community the happiness and peacefulness that they received from it.

RINGMORE BOUNDARY STONES 2010

- Quarries and stone suppliers; *Wayne Russell, Rob Beasor and Jim Mudge (loading) of Sibelco at Lee Moor and John Tucker of Mount Folly Farm*
- Stone selection; *Ann and John Bracey*
- Haulier and installation work; *Nick Rowell, Jonathan Rowell and David Greenway (lorry)*
- Land owners giving permission for Stones on their fields and works access; *Di and Dennis Collinson (Belle Vue Farm), Jem Deverson (Windwood Farm), John Hodder (Harraton Farm), Kathy Heath (Willings Farm), Linda Osmond (Turtle Barn), Mark Watson, Tracey Brand and Connor Henneghan (Journeys End), Michael Pearson (Langstone), National Trust (Coastal Stones), Robert Beard and Wilfred Walters (Scobbiscombe Farm), Steve Radford (Challaborough), & Terry Tall (Babland Farm).*
- *And many others who have supported and helped realize the project.*

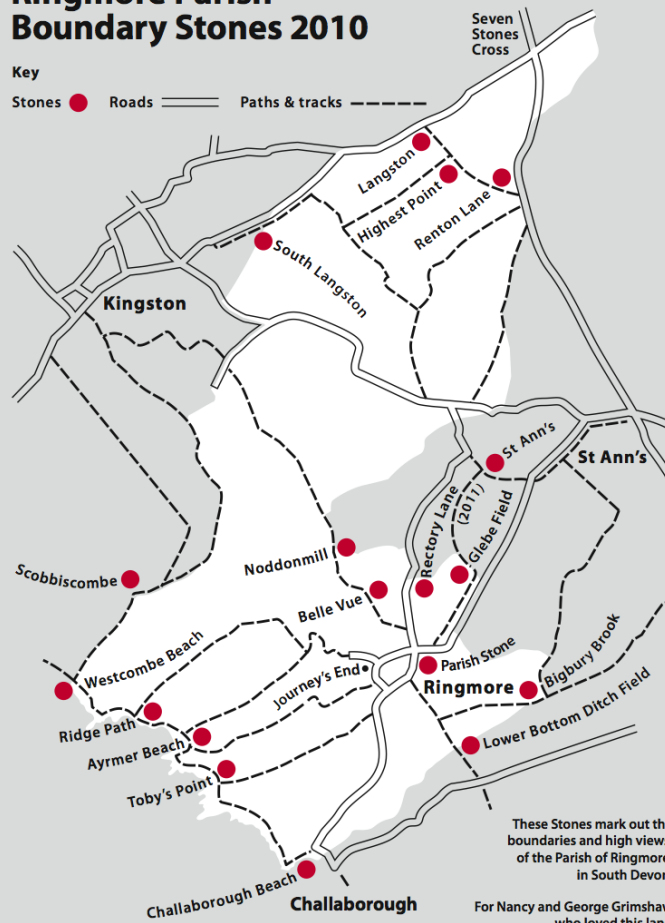
THE PLAN

To place a stone of up to 5 tons in mass at key points to mark the boundary Ringmore Parish in the County of Devon, generally where it was crossed by public footpaths. The stones would be placed in such a way to add beauty and interest to the setting and provide an attractive place for walkers to rest.

Ringmore Parish Boundary Stones 2010

Key

Stones ● Roads — Paths & tracks - - -



These Stones mark out the boundaries and high views of the Parish of Ringmore in South Devon

For Nancy and George Grimshaw who loved this land

THE STONES

Weathered granite stones kindly donated
by SIBELCO from Lee Moor quarry on
Dartmoor, and selected local stones
provided by John Tucker of Bigbury



RINGMORE BOUNDARY STONES 2010

Lee Moor Quarry



RINGMORE BOUNDARY STONES 2010

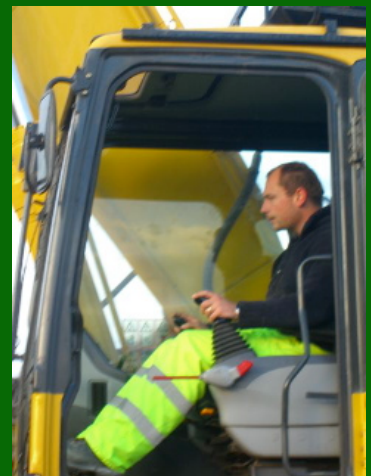
The Stones



RINGMORE BOUNDARY STONES 2010

Collecting the Stones

Two Days - Sept 20 - 21



RINGMORE BOUNDARY STONES 2010



RINGMORE BOUNDARY STONES 2010

Delivering the Stones

Two Days - Sept 20 - 21



RINGMORE BOUNDARY STONES 2010



Delivery to key distribution points including Journey's End car park and Bigbury Valley

RINGMORE BOUNDARY STONES 2010

BLESSING OF THE STONES

Sept 21 at 9.30 am



RINGMORE BOUNDARY STONES 2010

TIME CAPSULES



RINGMORE BOUNDARY STONES 2010

Time Capsules

- 16 of the 17 stones have Time Capsules buried beneath them, each containing objects and ideas which might intrigue or interest some future generation if ever these large stones were to be moved. Whilst we may know what was done, and why, it is probable that all records and histories will be lost by then with only rumour or folklore memory of the Time Capsules' existence.
- For the record the Capsules are as follows – my comments are only surmise and for a fuller story one would need to interview the originator of each.
- 1 Toby's Point – a tin containing wild flower seeds gathered from the cliff and local fields to record what grew at this time and that we were a nation of avid gardeners.
- 2 Aymer Beach – beneath the black monolith there is a genuine hoard of 500 one pence pieces contained in an old mustard pot, along with a memory stick of the installation of the Stones themselves. This pot is placed at the bottom of Smugglers and is a reminder of the loot which went that way.
- 3 Ridge Path – a box of Nancy's special chocolate cookies along with the recipe to remind us of all the walks and all the picnics which parishioners have had over their time in Ringmore
- 4 Westcombe Beach – a tin of wild pacific salmon, one of tuna and another of sardines are buried overlooking the sea in the hope that we will learn to fish so sustainably that out descendents will still know of these delights.

- 5 Scobbiscombe - beside the stream, a good supply of water, the time capsule contains a bottle of drinking water from Perthshire, and bear from Belgium and another from Jamaica, to shock a future discoverer by our wayward transport of such basic commodities over long distances rather than to source locally.
- 6 Belle Vue – here the stone lies near to the central point of the parish and it is appropriate that it covers the records of the local History Society
- 7 Glebe Field - the capsule here is the telephone directory for Plymouth and Ringmore and gives the names of the individuals and families who live here at this time. This site was chosen as once it was the Church which would have been the custodian of all names in the Parish.
- 8 Noddonmill – at this secluded corner of the Parish boundary the capsule contains a cluster of pieced black stones from a beach near Dublin where our great grandfather did military service to remind us that the Parish provided men for the Country's wars and that they went to far places in this service.
- 9 Rectory Lane – the capsule contains sporting artefacts provided by the parish ping pong society to reflect our society's fascination with sport.
- 10 St Ann's - here a box containing a large range of current drugs and medicine reflects the medicalisation of our generation, something which a future generation might grow beyond.

- 11 Renton Lane – has a capsule about survival (*I am not sure what John Holmes wants to be public about his story*) but his personal survival reflects the extraordinary survival of the parish boundary and of many public footpaths. Because the arrangement of these stones look to the hope of a future path link avoiding the main road, there is also a large bunch of keys to hasten the unlocking of the agreements.
- 12 Highest Point – the capsule is a circuit board from a modern box top unit placed here at this high point to reflect the world wide and far flung telecommunications industry.
- 13 Langston – at this furthest stone on the parish boundary the family buried stones from the islands in the Pacific beyond Bellingham on the west coast of America, and shells from the south coast of Tasmania, to mark the far flung families of our generation.
-
- 14 South Langston – here the stone marks the now lost line of the Parish Boundary running away over the open field, and backs onto the road to Kingston, so the capsule is an enamel map of the nearby National Cycle Network, to reflect the current state of roads, lanes and routes.
- 15Challaborough Beach has no capsule because of the shifting sands underneath the stone
- 16 Lower Bottom Ditch Field Field – has a capsule with detritus from a single visit to the beach to shock a future discoverer with our profligacy.
- 17 Bigbury Stone – here at the bottom of a deep valley, in the bottom of a deep hole, a number of mobile phones have been buried in the hope that when they are discovered reception will be better.
- The Parish Stone in Journeys End car park – sits on top of the Church Capsule in full sight of the church tower.

RINGMORE BOUNDARY STONES 2010

John Grimshaw

PLACING THE STONES

Stone #1 - Toby's Point



RINGMORE BOUNDARY STONES 2010

Stone #2 - Aymer Beach



RINGMORE BOUNDARY STONES 2010

Stone #3 Ridge Path



RINGMORE BOUNDARY STONES 2010

Stone #4 Westcombe Beach



RINGMORE BOUNDARY STONES 2010

Stone #5 Scobbiscombe



RINGMORE BOUNDARY STONES 2010

Stone #6 Bellevue Stone



RINGMORE BOUNDARY STONES 2010

Stone #7 Glebe Field



RINGMORE BOUNDARY STONES 2010

Stone #8 Noddon Mill



RINGMORE BOUNDARY STONES 2010

Stone #9 Rectory Lane



RINGMORE BOUNDARY STONES 2010

Stone #10 St Ann's



RINGMORE BOUNDARY STONES 2010

Stone #11 Renton Lane



RINGMORE BOUNDARY STONES 2010

Stone #12 Highest Point



RINGMORE BOUNDARY STONES 2010

Stone #13 Langston



RINGMORE BOUNDARY STONES 2010

Stone #14 South Langston



RINGMORE BOUNDARY STONES 2010

Stone #15 Challaborough Beach



RINGMORE BOUNDARY STONES 2010

Stone #16 Lower Bottom Ditch Field



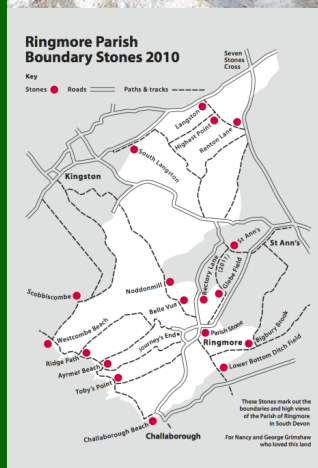
RINGMORE BOUNDARY STONES 2010

Stone #17 - Bigbury



RINGMORE BOUNDARY STONES 2010

Stone #18 - Parish Stone



RINGMORE BOUNDARY STONES 2010

PROJECT MANAGER

John Grimshaw



RINGMORE BOUNDARY STONES 2010

STONES TEAM



Tim Mudge, Nick and Johnathan Powell, David, John and Anne Bracey, Patsy, Chris and Richard Grimshaw, John Tucker

RINGMORE BOUNDARY STONES 2010

PROJECT COMPLETION

Marking the tidal boundary

25th September 2010



RINGMORE BOUNDARY STONES 2010